

GOGA Metaverse Whitepaper

Project Name: GOGA Metaverse

Introduction

Welcome to GOGA Metaverse, an innovative platform designed to revolutionize education through virtual reality (VR) and artificial intelligence (AI). Our mission is to provide quality education to rural children who lack access to qualified teachers and proper educational resources. By integrating AI companions and virtual labs, GOGA Metaverse aims to bridge the educational gap and ensure that every child has the opportunity to learn and grow.

Problem Statement

Millions of children in rural areas worldwide are deprived of quality education due to several challenges:

- **Unqualified Staff:** Many rural schools lack qualified teachers, leading to inadequate educational experiences.
 - **Insufficient Resources:** The absence of proper educational materials and laboratory facilities hampers the learning process.
 - **Educational Disparity:** Rural students often lag behind their urban counterparts, perpetuating a cycle of inequality.
 - **Conflict Zones:** Ongoing economic and civil conflicts exacerbate these issues, causing many students to discontinue their education and suffer from a lack of stability and opportunities.
-

Solution

GOGA Metaverse offers a comprehensive solution to these challenges through advanced technology:

- **Virtual Labs:** Interactive and immersive virtual labs simulate real-world experiments and activities, providing students with hands-on learning experiences without the need for physical lab facilities.
 - **AI Companions:** Advanced AI mentors guide students, answer questions, and provide personalized support, available 24/7 to adapt to each student's learning pace and style.
 - **Comprehensive Curriculum:** High-quality educational content tailored to meet the specific needs of rural students, designed to be engaging, interactive, and aligned with educational standards.
 - **VR Spaces for Classrooms, Conferences, and Events:** A dynamic alternative to regular video calls and physical venues, enhancing interaction and engagement.
-

GOGA Token

The GOGA Token is integral to our ecosystem, offering a range of functionalities:

- **VR Space for Classrooms, Conferences, and Events:** A dynamic alternative to regular video calls and physical venues, enhancing interaction and engagement.
 - **Smart Economic Cycle:** A robust economic model supporting the platform's purpose and sustainability.
-

Bridging Crypto and Real-World Applications

GOGA Metaverse connects various demographics, including students aged 3 to 25, by integrating the crypto world with real-world applications beyond trading. Our AI-integrated virtual reality metaspaces offer:

- **Interactive Animated Elements and Avatars:** Enhance learning with engaging and animated videos.
 - **AI-Powered Audio-to-Text Transcription:** Facilitate note-taking, online video consumption, and educational content creation.
 - **Customizable AI Companions:** Users can select AI companions according to their preferences, serving as reliable friends and sources of information.
 - **Dynamic Room Environments:** Hosts can change the room environment based on their mood and preferences.
 - **Personalized Avatars:** Create personalized avatars by selecting or taking a picture.
-

NFT Integration

Each room in GOGA Metaverse is assigned a dedicated server maintained as an NFT, offering unique ownership and monetization opportunities:

- **Transferable and Rentable Ownership:** NFT ownership can be transferred or rented, providing flexibility and additional revenue streams.
 - **Content Creation and Utilization:** Hosts can create and use content from the public store, including interactive videos, animated videos, and URL courses.
 - **Private and Public Content:** Owners can choose to keep content private or make it public for others to access, providing a means to earn from their creations.
-

Benefits

GOGA Metaverse offers transformative benefits, including:

- **Equal Opportunity:** Providing access to quality education levels the playing field for rural students.
 - **Enhanced Learning:** Interactive and engaging educational experiences improve understanding and retention of knowledge.
 - **Support for Educators:** AI companions alleviate the burden on teachers, allowing them to focus on personal mentorship and tailored instruction.
 - **Solution for Turbulent Situations:** In areas affected by economic and civil conflicts, GOGA Metaverse offers a stable and consistent educational environment.
-

Market Opportunity

The GOGA Metaverse addresses a critical need in the education sector:

- **Large Market:** Millions of rural students worldwide lack access to quality education.
 - **Government Initiatives:** Increased support and funding for educational technology solutions.
 - **Growing Demand:** Rising need for online and virtual learning platforms, especially post-pandemic.
-

Business Model

GOGA Metaverse operates on a sustainable and scalable business model:

- **Subscription-Based:** Affordable subscription plans for schools and individual students.
- **Freemium Model:** Basic access is free, with premium features available for a fee.
- **Partnerships:** Collaborations with educational institutions, NGOs, and government bodies.

Technological Framework

Virtual Reality

The GOGA Metaverse leverages advanced VR technology to create immersive and interactive environments. Users can navigate these environments using VR headsets, controllers, and other input devices.

Artificial Intelligence

AI is at the heart of the GOGA Metaverse, powering the intelligent companions and dynamic interactions. The AI system comprises several components:

- **Natural Language Processing (NLP):** Enables AI companions to understand and respond to user commands and conversations.
- **Machine Learning (ML):** Facilitates the evolution of AI companions through genetic knowledge transfer.
- **Computer Vision:** Allows AI companions to perceive and interact with the virtual environment.

Blockchain Technology

Blockchain technology ensures the security and ownership of data within the GOGA Metaverse. It provides a decentralized and transparent ledger for managing digital assets, user data, and AI evolution records.

AI Genetic Knowledge Transfer

The AI genetic knowledge transfer mechanism is a novel approach to AI learning and evolution. It involves:

- **Knowledge Inheritance:** AI companions inherit knowledge and skills from previous interactions and generations.
- **Adaptive Learning:** AI companions continuously learn and adapt based on user interactions and environmental changes.
- **Evolutionary Algorithms:** AI companions evolve through simulated genetic processes, enhancing their capabilities over time.

Key Components

AI Companions

AI companions are the primary interface for users within the GOGA Metaverse. They can:

- **Interact with Users:** Engage in conversations, provide assistance, and offer companionship.
- **Adapt to Environments:** Adjust behaviors and skills based on the environment and user preferences.
- **Evolve Over Time:** Enhance their knowledge and capabilities through genetic knowledge transfer.

Customizable Environments

Users can create and modify their virtual environments using intuitive tools and interfaces. Key features include:

- **Environment Templates:** Pre-designed templates for various themes and settings.
- **Customization Tools:** Tools for modifying landscapes, objects, and atmosphere.
- **Interactive Elements:** Objects and elements that respond to user actions and AI interactions.

Blockchain Integration

Blockchain integration ensures secure and transparent management of digital assets and data. Key aspects include:

- **Digital Asset Ownership:** Users have ownership rights to their virtual assets and environments.
- **Data Security:** Blockchain technology secures user data and AI evolution records.
- **Decentralized Control:** A decentralized system for managing transactions and interactions.

Start

Collect Metaverse Data

Process Data

Choose Web3 Storage Solution (Decision)

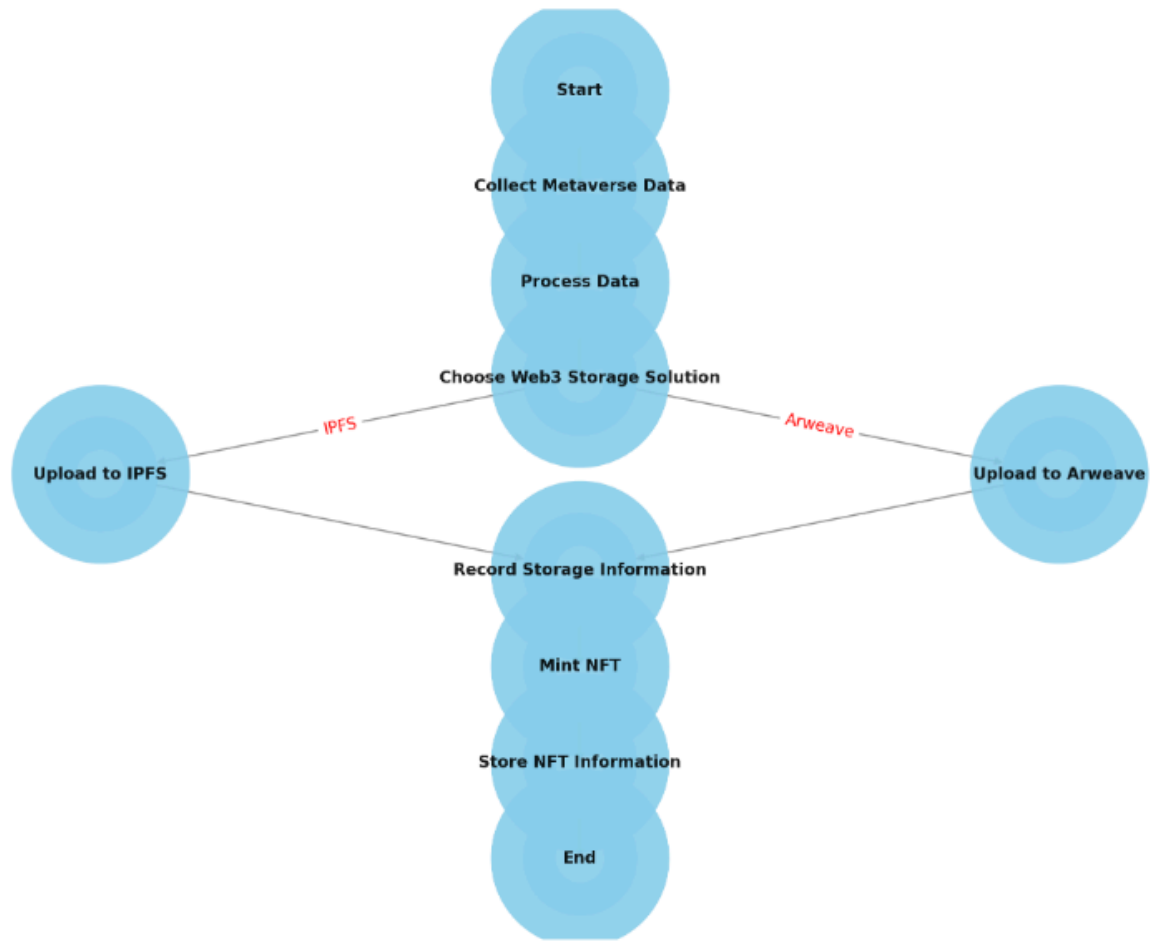
- **Upload to IPFS**
- **Upload to Arweave**

Record Storage Information

Mint NFT

Store NFT Information

End



Potential Applications

Education

The GOGA Metaverse can revolutionize education by providing immersive and interactive learning experiences. AI companions can serve as tutors, guiding students through personalized learning paths and adapting to their individual needs.

Entertainment

Users can explore diverse virtual worlds, engage in games, and participate in social events. AI companions can enhance entertainment experiences by offering personalized recommendations and dynamic interactions.

Healthcare

The GOGA Metaverse can support healthcare by providing virtual therapy sessions, health monitoring, and wellness programs. AI companions can assist users in maintaining healthy lifestyles and managing chronic conditions.

Business

Businesses can use the GOGA Metaverse for virtual meetings, training, and collaboration. Customizable environments and AI companions can enhance productivity and creativity in a virtual workspace.

Future Directions

Technological Advancements

Future advancements in VR, AI, and blockchain technologies will further enhance the capabilities of the GOGA Metaverse. Improved hardware and software will enable more realistic and interactive experiences.

Expanded Applications

The GOGA Metaverse will expand into new industries and applications, offering innovative solutions for education, entertainment, healthcare, business, and beyond.

Community and Ecosystem Growth

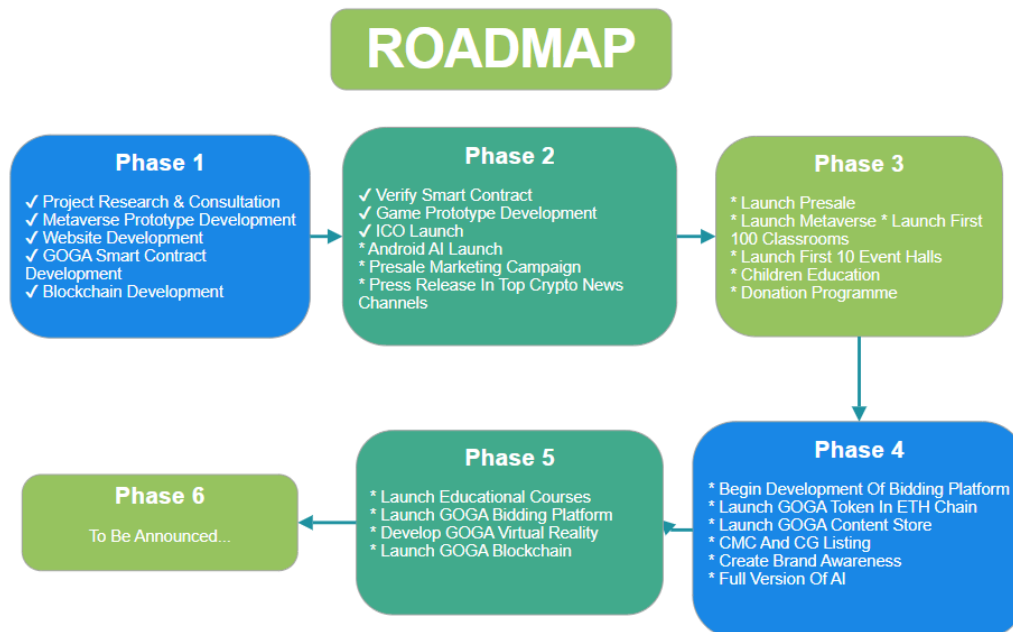
A growing community of users, developers, and partners will drive the evolution of the GOGA Metaverse. Collaborative efforts will lead to the creation of new content, tools, and services.

Token Metrics

No	Token Metric	Allocation	\$Token	Price (USD)	Value (USD)	TGE	Cliff (Month)	Vest (Month)	Term
	Total Supply	100%	100,000,000,000						
1	Seed Sale	10%	10,000,000,000	0.0002	2,000,000	5%	6	18	Linear Monthly
2	Pre-public Sale	10.0%	10,000,000,000	0.0003	3,000,000	5%	3	15	Linear Monthly
3	Public Sale	10.0%	10,000,000,000	0.00036	3,600,000	5%	1	10	Linear Monthly
4	Liquidity & Listing	10.0%	10,000,000,000	0.0004	4,000,000	0.5	0	5	
5	Marketing	15.0%	15,000,000,000			20%	0	18	Linear Monthly
6	Team	5.0%	5,000,000,000			5%	6	24	Linear Monthly
7	Advisors	2.0%	2,000,000,000			5%	6	10	Linear Monthly
8	Development	10%	10000000000			10%	0	48	
8.1	IN game Reward	5.0%	5,000,000,000			10%	0	48	Linear Monthly
8.2	Ecosystem Growth	3%	3,000,000,000			10%	6	24	Linear Monthly
8.3	Treasury	20.0%	20,000,000,000			5%	12	48	Linear Monthly
Total Supply			100,000,000,000		4,600,000				

Roadmap

Our path to success includes:



Team

The GOGA Metaverse team comprises experienced professionals with a shared vision:

- **Founder & CEO:** Vasanthanathan (Game Development, Innovation/Web3)
 - **Co-Founder:** Ramesh Govindraj (CEO of Esteem E Technologies Chennai Pvt Ltd)
 - **CMO:** Nandakumar(CEO @Auxilium Publishers & Distributors)
 - **Advisor:** Sakthi visakan rajaguru (Co-Founder FABC)
-

Call to Action

Join us in shaping the future of education. Whether you are an investor, partner, or advocate, your support can help us provide quality education to every child, regardless of their location.

- **Invest:** Support our mission to deliver quality education through innovative technology.
 - **Partner:** Collaborate with us to implement GOGA Metaverse in schools and communities.
 - **Advocate:** Spread the word about our solution to educational inequality.
-

Conclusion

The GOGA Metaverse represents a groundbreaking fusion of VR, AI, and blockchain technologies. By offering customizable environments and AI genetic knowledge transfer, it provides users with unparalleled virtual experiences. As the technology continues to evolve, the GOGA Metaverse will unlock new possibilities and transform how we interact with digital worlds.

Contact Information

Get in Touch:

- **Email:** Vasanth@gogatoken.com
- **Website:** www.gogatoken.com
- **Social Media:**
- Twitter: <https://x.com/GOGATOKEN>
- Telegram <https://t.me/GOGACoin>
- Youtube: https://www.youtube.com/channel/UCVpIOxwo_DpyO01Ga2WmN7Q